

FLEXO

BY OMEC ENGINEERING

series FX4.2

120 | 128 | 136 | 144 | 150
Complete double pre-bending,
4-roll plate rolling machines



series FX4.2



THE CHARACTERISTICS INDICATED DEPEND ON THE NUMBER OF PASSES AND THE MATERIAL STRENGTH.
 REFERENCE MATERIAL: YIELD STRESS: 240N/mm²; BREAKING STRENGTH: 40N/mm².
 CONE ROLLING: ± 70% MACHINE CAPACITY. THE MACHINES COMPLY WITH THE CURRENT HEALTH
 AND SAFETY STANDARDS (EC MACHINERY DIRECTIVE).

MODEL	PROCESSING WIDTH MM	Ø UPPER / LOWER / SIDE ROLL (D) MM	MAX. ROLLING CAPACITY			POWER KW	OVERALL WEIGHT KW	DIMENSIONS D x W x H (mm)	
			1.5 X D	3 X D	5 X D				
FX4.2.120	FX4.2.120.1050	1050	120-128-130-130	3	3,5	4,5	7,5	1400	1250x2500x1220
	FX4.2.120.1550	1550	120-128-130-130	2,5	3	4	7,5	1550	1250x3000x1220
	FX4.2.120.2050	2050	120-128-130-130	2	2,5	3	7,5	1700	1250x3500x1220
FX4.2.128	FX4.2.128.1050	1050	128-128-130-130	3,5	4	4,5	8,2	1470	1250x2500x1220
	FX4.2.128.1550	1550	128-128-130-130	3	3,5	4	8,2	1620	1250x3000x1220
	FX4.2.128.2050	2050	128-128-130-130	2,5	3	3,5	8,2	1770	1250x3500x1220
FX4.2.136	FX4.2.136.1050	1050	136-136-135-135	4	4,5	5	8,2	1600	1250x2500x1220
	FX4.2.136.1550	1550	136-136-135-135	3,5	4	4,5	8,2	1730	1250x3000x1220
	FX4.2.136.2050	2050	136-136-135-135	3	3,5	4	8,2	1920	1250x3500x1220
FX4.2.144	FX4.2.144.1050	1050	144-144-140-140	4,5	5	5,5	9,2	1850	1250x2500x1220
	FX4.2.144.1550	1550	144-144-140-140	4	4,5	5	9,2	2050	1250x3000x1220
	FX4.2.144.2050	2050	144-144-140-140	3	4	4,5	9,2	2200	1250x3500x1220
	FX4.2.144.2550	2550	144-144-140-140	2,5	3	4	9,2	2350	1250x4000x1220
FX4.2.150	FX4.2.150.1050	1050	150-150-150-150	5	5,5	6	9,2	1920	1250x2500x1220
	FX4.2.150.1550	1550	150-150-150-150	4,5	5	5,5	9,2	2180	1250x3000x1220
	FX4.2.150.2050	2050	150-150-150-150	4	4,5	5	9,2	2330	1250x3500x1220
	FX4.2.150.2550	2550	150-150-150-150	3,5	4	4,5	9,2	2450	1250x4000x1220
	FX4.2.150.3050	3050	150-150-150-150	2,5	3	3,5	9,2	2680	1250x4500x1220



ELLEX

BY OMEC ENGINEERING



The **FX4 series** marks the MECHANICAL 4-ROLL PLATE ROLLING MACHINES with complete double pre-bending and front release. The upper roll is fixed in position while the lifting and lowering movement is applied to the side rolls and bottom roll.

The plate pinching is fairly simple as once the plate has been introduced between the upper and lower rolls, the latter rises up to block it. Execution of the double pre-bend is performed by shifting the side rolls that, assembled standard with steel supports and bearings, guarantee maximum reliability and linearity of the movement. The rotation is applied to the upper and lower rolls using a self-braking motor coupled with a reducer. An interesting application provides for variable roll rotation speed adjustment with the use of an INVERTER. By reducing the speed during the initial plate deformation phases, this application allows for greater control and better results and, for large diameters, process time savings.

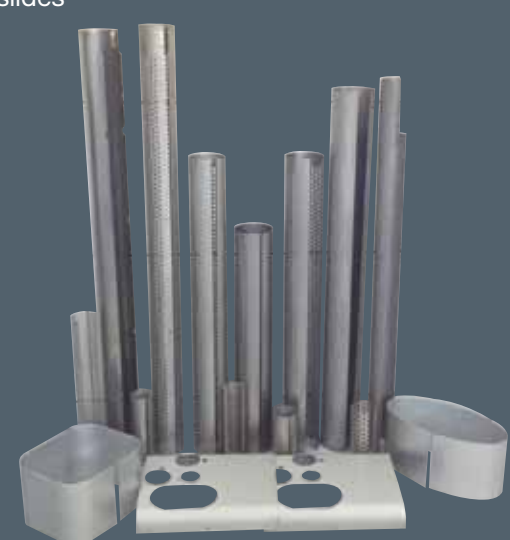
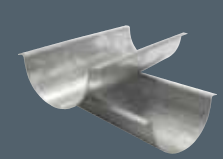
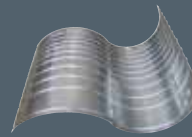
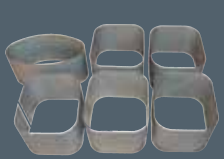
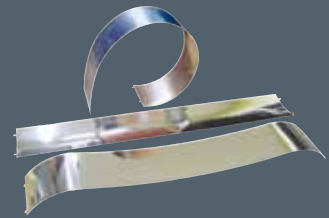
The **FX4 series** can be equipped with and served by a CNC thus allowing, in a very simple manner, better management of the curve profiles, with the capability of saving them for later use.

Equipped with Tempered rolls, Cone device, Motorized plate pinching, the FX4.2 series is an excellent compromise in quality and economy, as well as being easy to use. Numerous other accessories are available, completing the machining quality.



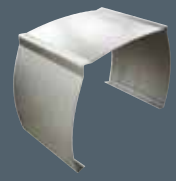
FX4.2 STANDARD EQUIPMENT

ELECTRONIC PHASE CONTROL for power supply
ELECTRICAL CABINET TO EC STANDARDS
PIN CONNECTOR for machine—pedal control unit connection
UPPER and LOWER Rolls MOTORIZED rotating with equal power
Side ROLL INCLINATION DEVICE for producing cones
ELECTRIC PREPARATION FOR DIGITAL DISPLAY(S)
ANALOG DISPLAY(S) for reading the roll position in movement
FRONT OPENING OF UPPER ROLL
2-PEDAL CONTROL UNIT + side roll lift/lower selector switches + Emergency mushroom button
MOTORIZED SIDE ROLLS for lifting/lowering
UPPER ROLL BALANCING when front bracket opened with bearing
MOTORIZED PLATE PINCHING
ROLL TEMPER HRC 55/60
Side roll supports in steel + screened bearings + external bronze slides



FX4.2 OPTIONAL ACCESSORIES

Front CONE DEVICE
DIGITAL DISPLAY for plate pinch height
TWO DIGITAL DISPLAYS for the positions of the side rolls
AUTOMATIC OPENING of front BRACKET
ROLL INCLINATION CONTROL LEVER (RIGHT - LEFT)
MOBILE CONTROL PULPIT, excl. DIGITAL DISPLAYS
DIGITAL DISPLAY for roll rotation
CN4M ECO with 7" colour touch screen with self-learning
CN4M PLUS with 12" colour screen with self-learning and simultaneous movements
CN4M EVO with 12" colour screen with self-learning and PROGRAM CONFIGURATION**
**PROGRAM CONFIGURATION CN4M EVO (depending on machine model)



Main phases of 4-roll plate bending. The second pre-bend is obtained without needing to extract and rotate the plate 180°



OMEC Costruzioni meccaniche

Via Indipendenza, 14
25012 Viadana di Calvisano (BS) Italy
Tel. +39 030 96 82 27
info@omecweb.it | www.flexoweb.it